

C | S E R I E S
W I D E S C R E E N



C-Series Widescreen Multifunction Display

Quick reference guide

C90W, C120W and C140W models

Raymarine®

Safety notices



Warning: Ensure safe navigation

This product (including the electronic charts) is intended for use only as an aid to navigation. It is designed to facilitate the use of official government charts, NOT REPLACE THEM. Only official government charts and notices to mariners contain all the current information needed for safe navigation, and the captain is responsible for their prudent use. It is the user's responsibility to use official government charts, notices to mariners, caution and proper navigational skill when operating this or any other Raymarine product.

Powering the display on

1. Press and hold the **POWER** button until the Raymarine logo appears.
2. Press **OK** to acknowledge the warning window.

Powering the Display Off

1. Press and hold the **POWER** button until the countdown reaches zero.

Note: If the **POWER** button is released before the countdown reaches zero, the power off is cancelled.

Adjusting the backlight

1. Press the **POWER** button.
The backlight level meter is displayed.
2. Using the rotary control, adjust the backlight to the appropriate level.

Simulator mode

The Simulator mode enables you to practice operating your display without data from a GPS antenna, radar scanner, fishfinder or AIS receiver.

The Simulator mode is switched on/off in the System Setup Menu. Once enabled, you can use the Simulator:

- Before installation: Connect the display to a 12V DC power supply, fused at 1 amp by attaching the red core from the power lead to positive (+) and the black core to negative (-).
- After installation: Whilst in a marina or at anchor.

Note: Incoming AIS safety messages cannot be displayed while the display is in Simulator mode.

Note: Any system settings made whilst in Simulator mode are not transmitted via SeaTalk to other equipment.

Enabling the simulator mode

1. Press **Menu**.
2. Select the **System Setup** menu.
3. Select the **Simulator** item, and change its value to **On**.

Screen information

Status bar

- Gives information specific to each application.
- Cannot be edited or moved.

Databar

- Gives information associated with your vessel or the environment.
- Customizable content.
- Vertical or horizontal format.
- Display or hide.
- Normal or large size.

Status icons

Confirm status of Sounder, GPS, AIS and Autopilot.

Database lists

- Include information you have added to the display's memory, such as waypoints.
- Highlight an entry using trackpad or rotary control to display related information.
- Editable using softkeys.

Pop-up messages

- Alert you to a situation, such as an alarm, or unavailable function.
- Not editable.
- May require a response. For example, ACKNOWLEDGE to silence alarms.

Dialog boxes

Enable data to be edited or entered into a store/list e.g. editing a waypoint.

The screenshot displays a marine electronic display interface. At the top, a status bar shows vessel data: Csr 25°45'.852N, 337°T, Pos 080°10'.527W, 0.248 nm, Ves 25°45'.621N, Pos 080°10'.424W, COG 337°, SOG 10.5 kt, Heading 339°T, Speed 10.3 kt, XTE 49 ft, and Steer >. Below this is a databar with 'North-Up', '(Relative Motion)', 'Local', and 'NAV' indicators. The main display area shows a map with several waypoints. A 'Waypoint List' dialog box is open, listing 'Waypoint 1' through 'Waypoint 5'. An 'Edit Waypoint' dialog box is also open, showing fields for Symbol, Position (50°47'.085N, 001°13'.842W), Name (waypoint1), Group (My Waypoint), and Comment. A prominent red 'AIS ALARM' pop-up message is displayed in the center, with the text 'Dangerous Target' below it. At the bottom of the screen, an 'ACKNOWLEDGE' button is visible.

Controls

5 ACTIVE

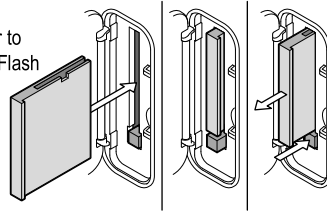
Selects which of the split windows is active. The selected window is outlined in red, and the associated softkeys displayed.

7 MENU

Press to access the set up menus.

1 Chart card slot

Open the card reader door to insert or remove CompactFlash cards, which are used for upgrading cartography, and archiving waypoint, route and other data.



2 PAGE

Press to display the available page softkeys for the current page set. Press and hold to access the Page Setup menu.

3 WPTS/MOB

Press and release to show the waypoint softkeys. Press again to place a waypoint at your vessel's position. Press and hold to place a Man Overboard (MOB) marker at your current position.

4 RANGE

Press to change the display scale so that a smaller or larger area can be seen on the screen.

6 DATA

Press to access the archive and transfer, and databar options.

8 CANCEL

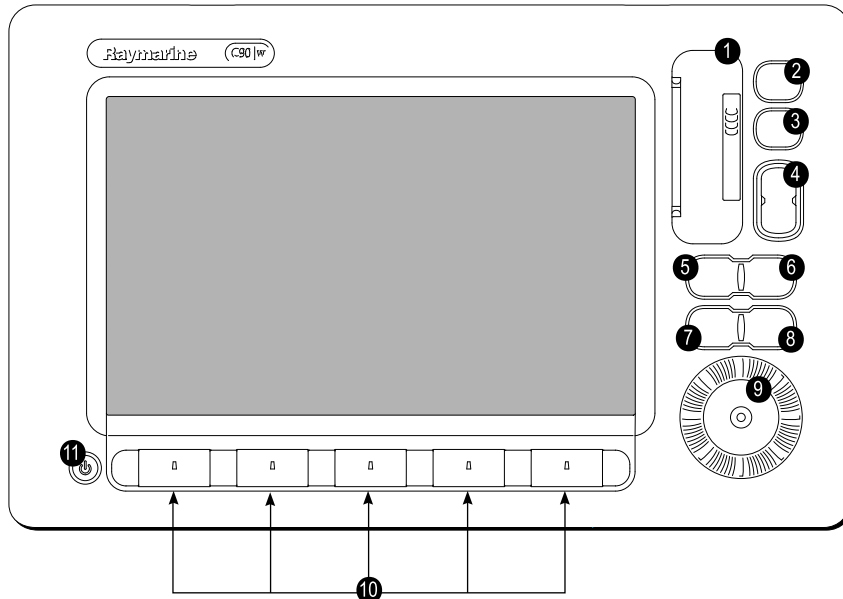
Press to quit the selected on-screen option when editing data, or to return to a previous softkey or menu level.

9 Unicontrol™

The smooth inner ring is the TRACKPAD, which controls the on-screen cursor and scrolls through menus. The outer ring is the ROTARY CONTROL, which is used to adjust values. In the middle of the Unicontrol is the OK button, which is used to select options.

11 POWER

Press once to switch the unit ON. Press again to access the backlight adjustment and scanner power controls. Press and hold to switch the unit OFF.



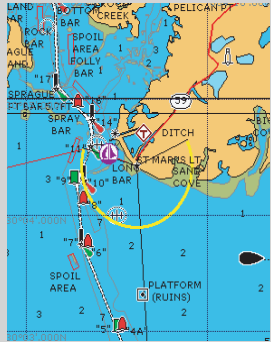
10 Softkeys

Press to select the corresponding function identified by the on-screen label.

Applications

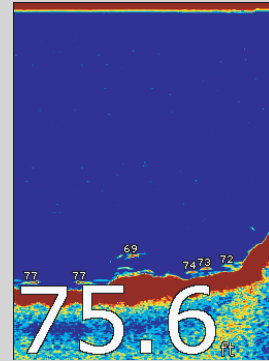
The C-Series multifunction display includes a number of applications:

Chartplotter



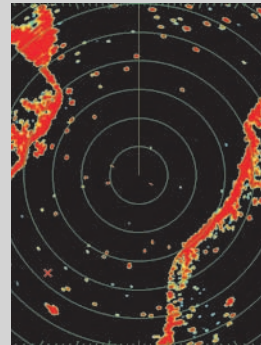
- Locate where you are.
- Interpret your surroundings.
- Monitor where you are going.
- Record where you have been.
- Navigate to a specified position (waypoint).
- Build and navigate routes.
- View details of nearby features & services.
- View details of boats equipped with AIS.
- Measure distances and bearings.

Fishfinder



- See where the fish are.
- Identify underwater objects.
- View seabed structure.
- View sea depth and temperature data.
- Mark points of interest, like fishing spots or wrecks

Radar



- Detect and track targets.
- Avoid collisions.
- Measure distances and bearings.
- Place waypoints.
- Display details of targets (MARPA).
- Trigger an alarm when a target is in zone.
- Display the identity of other vessels (AIS).

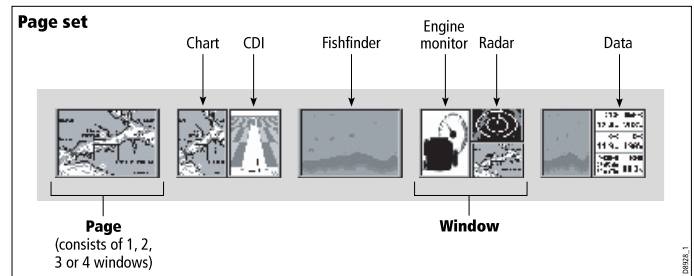
Other applications

In addition to the core applications described above, your multifunction display also includes the following applications:

- **3D chart** — an easy-to-use chart format providing a three dimensional graphical view of land and sea contours around your vessel. The 3D chart application requires upgraded cartography.
- **Data** — displays system and instrument data on your multifunction display.
- **Engine** — enables you to view information in the form of gauges and digital data, from up to three compatible engines.
- **Course Deviation Indicator (CDI)** — provides a graphical representation of your vessel's course in a 'rolling road' format.
- **Sirius weather** (North America only) — overlays historical, live, and forecasted weather graphics on a world map.
- **Sirius radio** (North America only) — use your multifunction display to control a connected Sirius Satellite Radio receiver.

Displaying applications

The various applications that make up your multifunction display are shown in a series of screens known as page sets. There are 4 pre-configured and one empty page set to choose from. Each page set contains 5 pages. These pages are made up of 1, 2, 3 or 4 windows combined in various formats. Each window can display an application:



If required, you can change the combination and layout of these page sets to meet your particular needs.

Selecting a page set and application page

1. Press and hold the **PAGE** button until the Select Page Set dialog appears.
2. Using the trackpad, highlight the required page set.
3. Press the **OK** button to select the highlighted page set. An application page from that page set is displayed.
4. Press the **PAGE** button repeatedly to toggle between the available application pages in the page set. Alternatively, use the appropriate softkey to select the relevant application page.

Selecting an application window

1. When more than one application is displayed at any one time, the active application window is highlighted with a red border:
2. Press the **ACTIVE** button to move the red border to another window on the screen.
3. Press and hold the **ACTIVE** button to switch the currently highlighted window to full-screen mode.

4. Press and hold the **ACTIVE** button to return the screen to split-window mode.

Note: To obtain a MOB position, your multifunction display must have a GPS position fix.

Emergencies and warnings

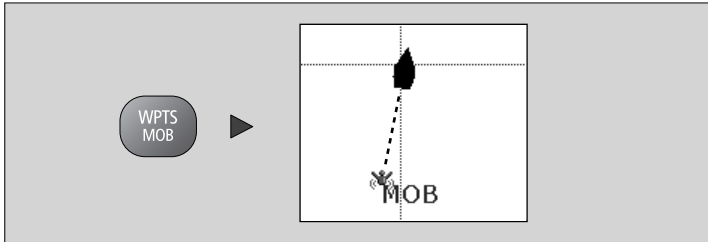
You can use your multifunction display to mark the position of a man overboard (MOB), or to sound an alarm when a particular situation occurs.

An example is when a depth limit is reached, or a specified period of time has elapsed.

Man overboard

If you lose a person or object overboard, you can use the Man Overboard (MOB) function to return to the spot.

The MOB function is available at all times on your multifunction display, regardless of which application is running.



Activating the man overboard function

1. Press and hold the WPTS/MOB button for three seconds.

Cancelling a MOB alarm

1. Press and hold the **WPTS/MOB** button for four seconds.

Once the MOB alarm is cleared:

- the chart application motion mode is reset.
- the databar mode is reset.
- GOTO and route functions are restored.

Alarms

Alarms are used to alert you to a situation or hazard requiring your attention.

When an alarm sounds, a message dialog is displayed, explaining the reason for the alarm.

Cancelling alarms

1. Press the **ACKNOWLEDGE** softkey.

Raymarine plc

Anchorage Park, Portsmouth,
Hampshire PO3 5TD,
United Kingdom.

Tel: +44 (0) 23 9269 3611
Fax: +44 (0) 23 9269 4642

www.raymarine.com

Raymarine Inc.

21 Manchester Street, Merrimack,
New Hampshire 03054-4801,
USA.

Tel: +1 603.881.5200
Fax: +1 603.864.4756

www.raymarine.com

Raymarine®
...world leaders in marine electronics.

