

C | S E R I E S
W I D E S C R E E N

Raymarine®



▲ C90W 9"
Multifunction Display

▲ C140W 14.1"
Multifunction Display

▲ C120W 12.1"
Multifunction Display



C | S E R I E S

W I D E S C R E E N

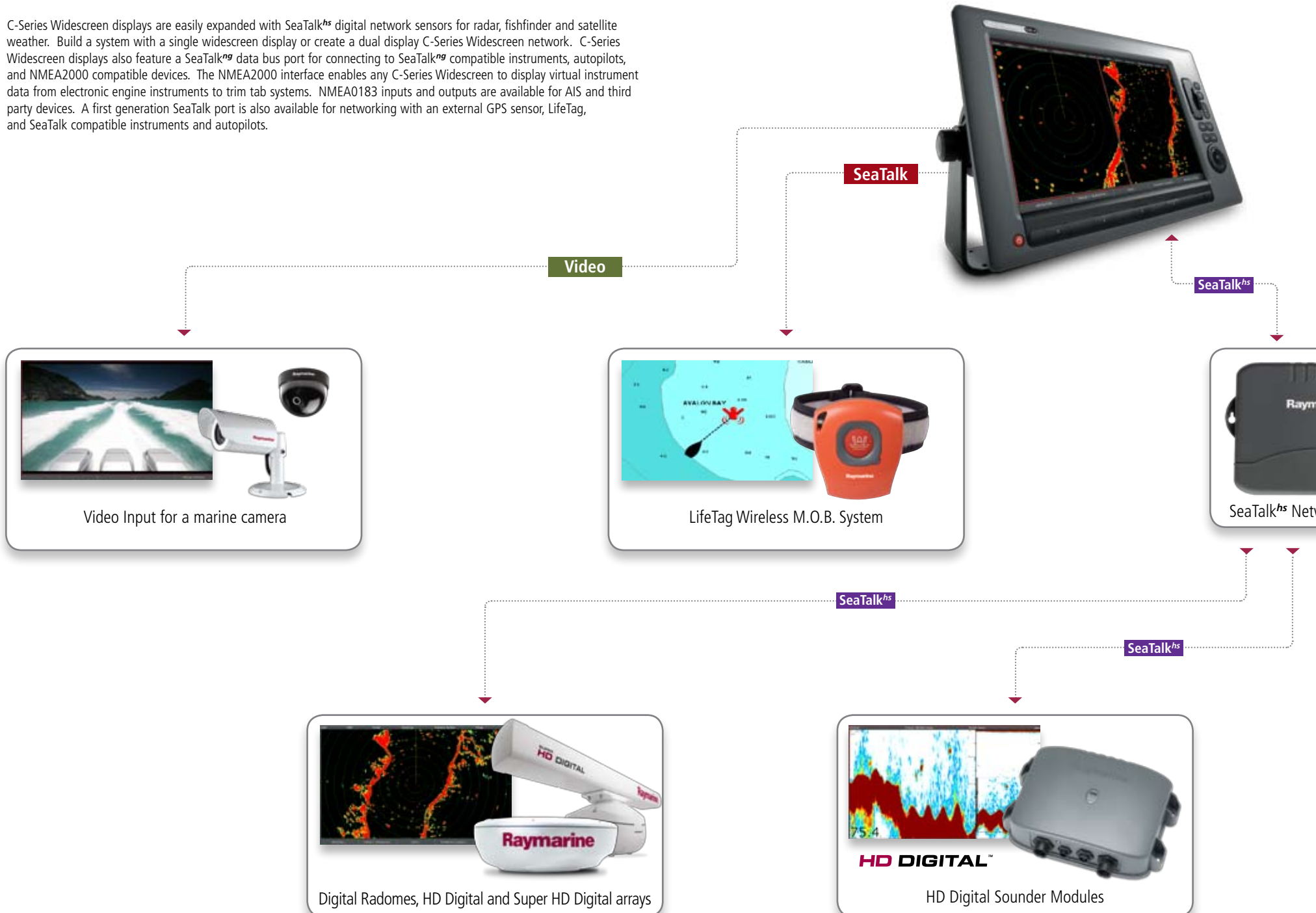
The all new C-Series Widescreen expands the power of multifunction navigation with larger, brilliant displays, increased performance, expanded networking and video integration.



BUILD YOUR C-SERIES WIDESCREEN NETWORK

C-Series Widescreen displays are easily expanded with SeaTalk^{hs} digital network sensors for radar, fishfinder and satellite weather. Build a system with a single widescreen display or create a dual display C-Series Widescreen network. C-Series Widescreen displays also feature a SeaTalk^{ng} data bus port for connecting to SeaTalk^{ng} compatible instruments, autopilots, and NMEA2000 compatible devices. The NMEA2000 interface enables any C-Series Widescreen to display virtual instrument data from electronic engine instruments to trim tab systems. NMEA0183 inputs and outputs are available for AIS and third party devices. A first generation SeaTalk port is also available for networking with an external GPS sensor, LifeTag, and SeaTalk compatible instruments and autopilots.

Master C-Series Widescreen Display



* SeaTalk^{hs} switch only required when utilizing more than two digital sensors

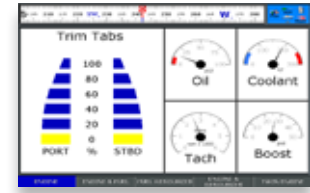
C-Series Widescreen Display

SeaTalk^{ng} Backbone

SeaTalk^{ng}
The Next Generation Data Bus

ST70 Instruments & Autopilot

NMEA 2000



NMEA 2000 Engine Monitoring

NMEA 0183

SeaTalk^{ng}

SeaTalk^{ng}

NMEA 0183

SeaTalk^{hs}



SeaTalk^{hs}
High Speed Network

Network Switch *

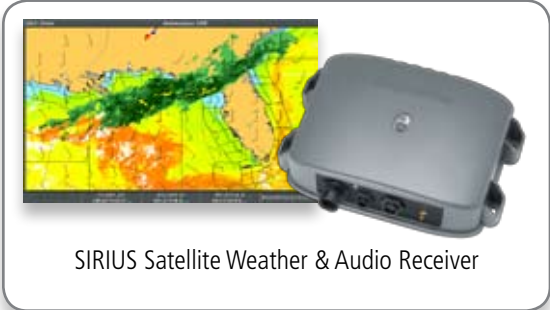


AIS250/AIS500 Automatic Identification System



DSC VHF Radio

SeaTalk^{hs}



SIRIUS Satellite Weather & Audio Receiver



RayTech at Home Planning Software

C | S E R I E S

W I D E S C R E E N



C90W 9" Multifunction Display

C140W 14.1" Multifunction Display

C120W 12.1" Multifunction Display

GO WIDER

- Theatre like widescreen display
- View more navigation data simultaneously
- Make smarter navigation decisions

READY-TO-NAVIGATE

- Internal high sensitivity GPS sensor
- Pre-loaded Navionics charts of the US
- Easy to install and ready-to-navigate right out of the box

EXPANDABLE

- HD Digital network sensors for radar and fishfinder
- Dual display SeaTalk^{hs} networking
- SIRIUS weather and radio compatible
- Video camera input
- AIS compatibility with Buddy Tracking

HIGH DEFINITION

- Widescreen resolutions up to 1280 x 800
- Optically bonded LCD for beautiful color and contrast
- High definition view of 3D charts, satellite photos, HD Digital radar and fishfinder



UNICONTROL™

The intuitive UniControl™ integrates the cursor, the OK key and rotary control for streamlining activities and feature selection.



3D NAVIGATION

Navigate with high resolution 3D and Satellite photo charts using optional Navionics Platinum charts on CompactFlash. The powerful C-Series Widescreen graphics coprocessor delivers quick screen redraws and stunning 3D graphics.



HotMaps

NAVIONICS Platinum

NAVIONICS Gold

PRE-LOADED CHARTS

C-Series Widescreen displays are pre-loaded with ready-to-navigate Navionics charts of the Coastal U.S. Charts include: aids to navigation, depth, contours, spot soundings, depth shading and isolated hazards.



NAVIONICS
CHARTS INSIDE

INTERNAL GPS SENSOR

A built in high sensitivity GPS sensor with WAAS capability eliminates the need for an external GPS antenna in most installations.



C-Series Widescreen is compatible with the following Navionics Charts on CompactFlash:

- Navionics HotMaps
- Navionics Gold
- Navionics Gold+
- Navionics Platinum

DIGITAL RADOMES

Network C-Series Widescreen with a choice of two high performance digital radome antennas. Choose the powerful yet space saving RD418D 18" radome with 4 kilowatts of output power and a narrow 4.9° horizontal beam width for enhanced target resolution. The larger 24" 4 kW RD424D offers superior resolution with a 3.9° degree beam width. Both radomes are easy to install, thanks to a small diameter inter-unit cable for both power and SeaTalk^{hs} networking.



DIGITAL

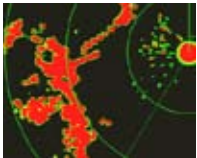


HD & SUPER HD DIGITAL™ RADAR

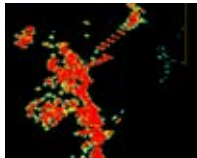
Using highly advanced digital signal processing, HD and Super HD Digital open array radar scanners surpass conventional radars with incredibly detailed target resolution and fully automatic operation. Advanced features include Dual Range mode and a multi level 256 color target display with 5 color palettes. For the ultimate radar experience Super HD Digital arrays offer superior digital signal processing, delivering the performance of much larger and more powerful radar systems.



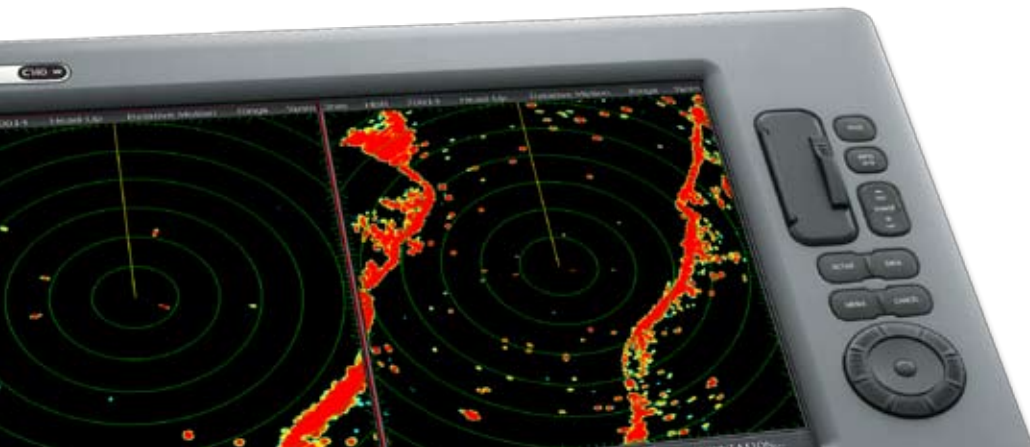
SEE THE SUPER HD DIGITAL DIFFERENCE



Traditional analog radars see the targets



Super HD Digital radar eliminates noise and brings targets into clear focus

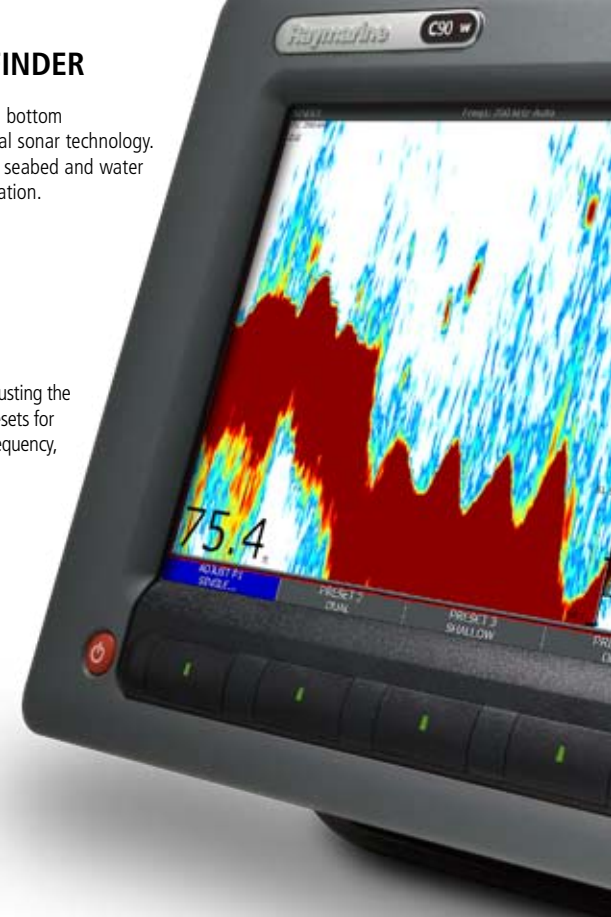


UNMATCHED HD DIGITAL FISHFINDER

C-Series Widescreen offers superior fish detection and bottom discrimination using Raymarine's unmatched HD Digital sonar technology. The HD Digital fishfinder instantly adapts to changing seabed and water conditions providing fully automatic "hands off" operation.

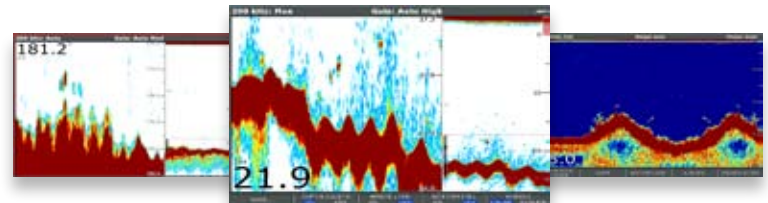
FISHING PRESETS

Engineered for anglers that don't want to waste time adjusting the display, C-Series Widescreen offers 4 fishfinder screen presets for one touch access to your favorite views of split screen, frequency, zoom, bottom lock and A-scope.



HD DIGITAL SOUNDER MODULES

Choose the 600 watt DSM30 or the 1000 watt DSM300. Each HD Digital sounder module is dual frequency (200/50 kHz) and can be configured with a wide array of transom, in-hull and thru-hull transducer options.



HD DIGITAL



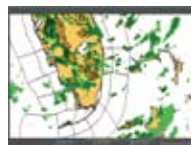
VIDEO INTEGRATION

Transform C-Series Widescreen into a video observation display by using a remotely mounted marine camera. Alternatively connect to on board video sources like DVD or Sat TV for access to video entertainment at your helm.

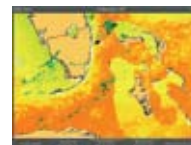


SIRIUS MARINE WEATHER

Track storms, receive weather alerts and view animated weather radar using SIRIUS Marine Weather service. In addition to the latest weather reports, SIRIUS Marine Weather provides highly detailed Sea Surface Temperature data overlaid in color on the weather map. Requires the optional SeaTalk^{4s} compatible SR100 SIRIUS receiver.



NowRad[®] Weather Radar



Sea Surface Temperature



AIS INTEGRATION

AIS (Automatic Identification System) enables the wireless exchange of navigation status between vessels and shore-side traffic monitoring centers. Using the optional AIS250 receiver or the AIS500 transceiver, C-Series Widescreen graphically overlays AIS targets in both chartplotter and radar modes.

- AIS target tracking enhances your situational awareness by monitoring a target's name, course, speed, and navigation status
- Reconcile AIS targets with radar targets for added safety
- Buddy Tracking visually identifies friendly AIS targets
- Transmit your vessel AIS data with the optional AIS500 Class B Transceiver



MMST	Name
1	Albatross
5	Fishing Time
7	MV Garland
8	Harbor Mist
10	Escape



On screen SIRIUS satellite radio tuner controls

SIRIUS SATELLITE RADIO

In addition to weather, the optional SR100 receiver offers SIRIUS Satellite Radio channel tuning directly through the C-Series Widescreen display. Enjoy over 130 channels of original satellite radio programming including commercial free music, sports, news, talk and more.

*A monthly subscription to Sirius Marine Weather and/or Satellite Radio is required.



INTEGRATION

In addition to SeaTalk^{hs}, networking, C-Series Widescreen integrates with SeaTalk^{ng} and NMEA2000 networks. A first generation SeaTalk, three NMEA0183 inputs and two NMEA0183 outputs are also standard.

SeaTalk^{hs}
High Speed Network

SeaTalk^{ng}
The Next Generation Data Bus



VIRTUAL ENGINE INSTRUMENTS

Integrate with NMEA2000 compatible engines and trim tabs.



AUTOPILOT CONTROL

Using the SeaTalk^{ng} data bus, C-Series Widescreen can activate and control Raymarine SmartPilot X-Series autopilots directly from the chartplotter interface.



DSC POSITION POLLING

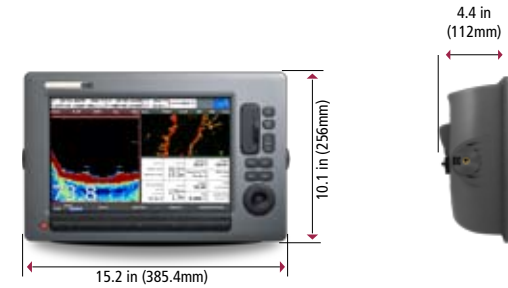
Locate your friends on the chart using VHF Digital Selective Calling and Raymarine VHF radio.



C90 DIMENSIONS



C120 DIMENSIONS



C140 DIMENSIONS



C | S E R I E S

W I D E S C R E E N

ORDERING INFORMATION

C-SERIES WIDESCREEN MULTIFUNCTION DISPLAYS

Description	Part number
C90W - 9" Widescreen Multifunction Display with Pre-loaded U.S. charts	E62111-US
C90W - 9" Widescreen Multifunction Display with Pre-loaded charts of South America, Asia and Oceania	E62111-RW
C120W - 12.1" Widescreen Multifunction Display with Pre-loaded U.S. charts	E62113-US
C120W - 12.1" Widescreen Multifunction Display with Pre-loaded charts of South America, Asia and Oceania	E62113-RW
C140W - 14.1" Widescreen Multifunction Display with Pre-loaded U.S. charts	E62115-US
C140W - 14.1" Widescreen Multifunction Display with Pre-loaded charts of South America, Asia and Oceania	E62115-RW

DIGITAL RADOMES

Description	Part number
RD418D with 10 meter cable	E92129
RD418D without cable	E92130
RD424D with 10 meter cable	E92131
RD424D without cable	E92132

HD DIGITAL AND SUPER HD DIGITAL RADARS

Each includes pedestal, array, VCM100 voltage convertor module and 15 meter cable

Description	Part number
RA1048D - 4kW 48" HD Digital Open Array	T52071
RA1072D - 4kW 72" HD Digital Open Array	T52074
RA1048SHD - 4kW 48" SUPER HD Digital Open Array	T52085
RA1072SHD - 4kW 72" SUPER HD Digital Open Array	T52087
RA3048SHD - 12kW 48" SUPER HD Digital Open Array	T52086
RA3072SHD - 12kW 72" SUPER HD Digital Open Array	T52088

HD DIGITAL SOUNDER MODULES

Description	Part number
DSM30 Digital Sounder Module	E63074
DSM300 600W/1kW Digital sounder module	E63069G

TRANSDUCERS

Choose transom, in-hull or thru-hull transducers. Go to raymarine.com to see the full selection of digital sounder module transducer options

GPS/SIRIUS/AIS RECEIVERS

Description	Part number
Raystar 125 GPS Sensor	E32042
SR100 Sirius Weather Service Receiver	E03008
AIS250 Receiver Module	E03015
AIS500 Class B Transceiver	E62235
Smart Heading Compass Sensor	E12102

MARINE CAMERAS

CAM50 (NTSC) Dome Camera	E03016
CAM50 Reverse Image (NTSC) Dome Camera	E03018
CAM100 Day/Night Marine Camera (NTSC)	E03007
CAM100 Day/Night Reverse Image Marine Camera (NTSC)	E03021

KEY SPECIFICATIONS

Screen Resolution	C90W 800x480 WVGA C120W 1280x800 WXGA C140W 1280x800 WXGA
Video Inputs	1
Network Sensors	Digital Radar, Digital Sounder Module, SIRIUS Marine Weather
NMEA2000	1
SeaTalk ^{hs}	2
SeaTalk ^{ng}	1
SeaTalk (1st Generation)	1
NMEA0183 Inputs	3
NMEA0183 Outputs	2
AIS Support	Yes
Waypoints	3000
Routes	50
Voltage Requirements	10.7 to 32 Volts DC (12/24v nominal)
Power Consumption Typical power consumption with full backlight on	C90W 19 Watts C120W 22 Watts C140W 32 Watts

Detailed Specifications and product information available at www.raymarine.com

2 year limited warranty

Lifestyle photography courtesy of Genmar and Tiara



Raymarine®

LIT82257

Raymarine Inc
21 Manchester Street
Merrimack, NH 03054
USA
Tel: 603.881.5200
Fax: 603.864.4756
www.raymarine.com

Raymarine plc
Anchorage Park
Portsmouth, Hampshire PO3 5TD
United Kingdom
Tel: +44 (0)23 9269 3611
Fax: +44 (0)23 9269 4642
www.raymarine.com

Additional information, specifications and interactive product tours available online at www.raymarine.com

Product specifications subject to change without notice



01/09