

Dual Axis Forward Looking Sonar

INTERPHASE

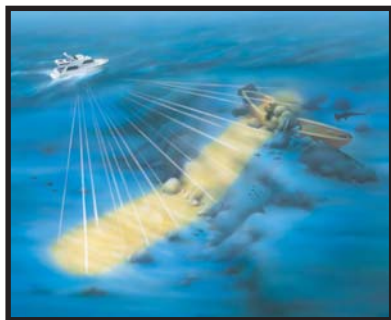
Forward Looking Technology

Color Twinscope™



- Sunlight viewable wide panoramic color display
- Scans forward vertically, and horizontally
- Split-Screen modes for downlooking depth and large digit data displays
- External alarm capability, NMEA depth output, speed/temp and GPS inputs
- Immediate depth and range information with unique screen cursor
- Video input connector for use with optional cameras, VCR and DVD players

Split screen view showing current depth below vessel on left and forward looking horizontal view on right



Forward vertical scan (at far left) shows obstructions, submerged objects and shoaling bottom directly in front of vessel



Horizontal scan and down looking beam (at left) are useful for searching wide areas in deeper water or in shallow areas to help to find channels and deeper water

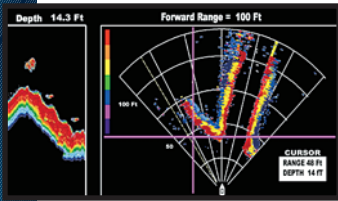
Introducing the all new Color Twinscope from Interphase Technologies. For the first time, view the underwater world in front of and below your vessel in 16 colors on a panoramic, sunlight-viewable LCD display. With Interphase's exclusive phased array scanning sonar technology, you get advanced sonar performance in a compact, feature packed display—all at a very affordable price.

Working like underwater ultrasonic radar, the Color Twinscope scans a moving beam over a 90 degree arc either vertically, from the surface ahead to the bottom below—or horizontally, back and forth across the bow of the boat like a searchlight. Unique among scanning sonars, the new Interphase Color Twinscope uses a small and easy to install transducer with no moving parts.

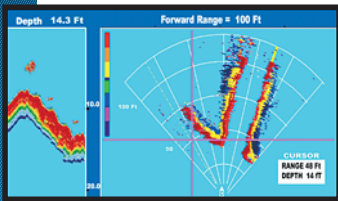
Vessels trying to find safe passage through pinnacles,

rock outcroppings, coral heads, reefs and shoaling conditions, or concerned about hitting submerged objects like whales, shipping containers and large icebergs will find the new Color Twinscope a powerful addition to their navigation equipment. It is ideal for cruising through dangerous, uncharted waters.

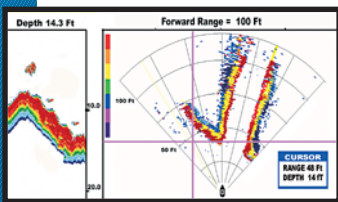
Serious sportfishing boats will find the Color Twinscope's ability to quickly search large areas, its forward target detection with external alarm capability and the resolution enhancing 16-level color display major competitive advantages. All owners will appreciate the unique display cursor that instantly provides range and depth to selected forward objects, the ability to connect an optional camera to monitor engine rooms or other important areas and its straightforward, easy operation.



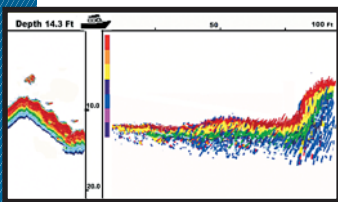
Easy To See Night Colors



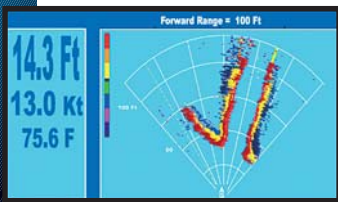
Normal 16 Color Display



Sunlight Visible Mode



Split Screen Forward Vertical and Downlooking Display



Split Screen Forward Horizontal and Large Digit Data Display



Video Input for Cameras, DVD and VCR Players

INTERPHASE Color Twinscope™

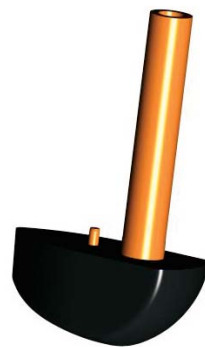
The Color Twinscope's wide display format is ideal for showing long range forward looking views and side by side split screen views. By using its split screen display capability, you can scan areas to the side and forward of the boat while simultaneously viewing the bottom directly below. Connect an optional NMEA output speed and temperature transducer or GPS, and monitor important data with the large digit split screen display. The Color Twinscope is fog and waterproof and like all Interphase Sonars is designed and built with quality in the USA.

The Color Twinscope is Packed with Advanced Features

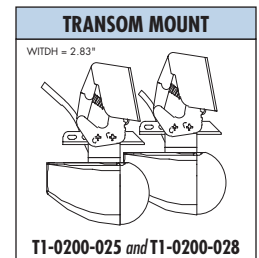
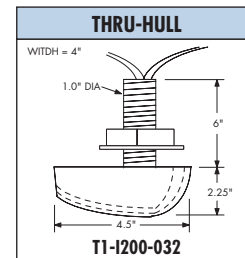
- Hi Power for Forward Range of up to 1,000 feet
- Full Screen Vertical and Horizontal Forward-Looking Displays
- Split Screen Displays Showing Downlooking Depth or Large Digit Data
- Easy One-Touch User Interface
- NMEA 0183 Depth Output
- NMEA 0183 Speed/Temp Input
- "Power-Off" Memory Remembers all Settings
- Quick-Disconnect Mount
- USB Interface
- Keel Offset Adjustment
- Adjustable Display Backlight
- Three Selectable Color Schemes for Night, Sun and Normal Viewing
- Backlit Keypad
- 16 Colors
- Video Input for Camera, VCR or DVD
- Forward Range and Depth Alarms
- External Alarm Capability
- Scan Sector Width and Direction Adjustments
- User Selectable Languages and Units.
- Optional NMEA Speed/Temp Transducer Available
- Simple 2nd Station Connection
- Easy Upgrade -Can Use Pre-existing Interphase Twinscope Transducers

Built to Work, Built to Last

- Wide (3.41" H x 6.1" W) TFT Sunlight Viewable Color LCD
- 480 x 234 Pixels
- Adjustable CCFL Backlight
- Compact Dimensions: 9.4"W x 5.9"H x 3.25"D
- Flush Mount Template Included
- Weight of Display Approx. 3.5 lbs
- Fog and Waterproof
- Over 3,000 W Peak to Peak Power (400 W rms)
- 8 Ch. Phased Array Transducer, No Moving Parts
- 200 or 233 Khz Operation
- 12 Degree Beam Angle
- TVG: Time Variable Gain Receiver
- 10 to 16 VDC, less than 0.75 Amp.
- Sunlight, Normal and Night Colors
- Split Screen Forward Vertical and Downlooking Display
- Split Screen Forward Horizontal and Downlooking Display
- Split Screen Forward Horizontal and Large Digit Data Display
- Split Screen Forward Vertical and Large Digit Data Display
- Full Screen Vertical, Horizontal and Setup displays



Single Thru-Hull or Dual Transom Mount Transducers available for easy installation on most any boat



INTERPHASE
Forward Looking Technology

Interphase Technologies, Inc.

2880 Research Park Drive, Suite 140
Soquel, CA 95073 USA

PHONE 831.477.4944

FAX 831.462.7444

EMAIL comments@interphase-tech.com

WEB SITE www.interphase-tech.com