

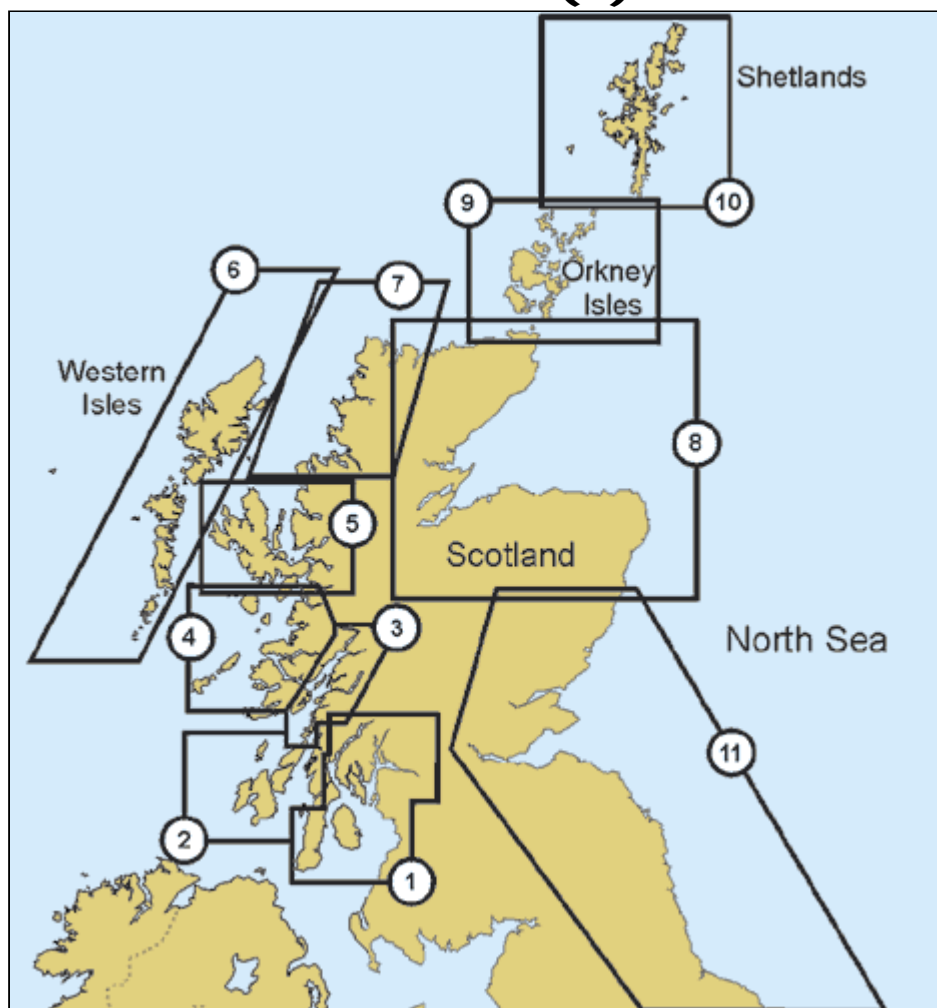
C-MAP

THE ELECTRONIC CHART STANDARD







North America | Central & South America | Northern, Western & Central Europe | Southern Europe |
Africa & The Middle East | Indian Ocean, Asia & Oceania | Russian Federation

Scotland (L)



Click on the **code** for more information

No					Description
1	M-EW-M023	-	M-EW-C023	-	FIRTH OF CLYDE
2	M-EW-M024	-	M-EW-C024	-	FIRTH OF CLYDE TO SOUND OF JURA
3	M-EW-M025	-	M-EW-C025	-	LOCH CRINAN TO LOCH LINNHE
4	M-EW-M026	-	M-EW-C026	-	MULL TO LOCH NEVIS
5	M-EW-M027	-	M-EW-C027	-	ISLE OF SKYE
6	M-EW-M043	-	M-EW-C043	-	WESTERN ISLES
7	M-EW-M044	-	M-EW-C044	-	SCOTLAND NORTH: WEST COAST
8	M-EW-M035	-	M-EW-C035	-	SCOTLAND NORTH: EAST COAST
9	M-EW-M042	-	M-EW-C042	-	ORKNEY ISLANDS

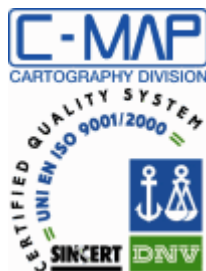
10	M-EW-MO41	-	M-EW-CO41	-	SHETLAND ISLANDS
11	M-EW-MO36	-	M-EW-CO36	-	BRIDLINGTON BAY TO MONTROSE

(*) C-CARDS with chart information in Italian

L=Local; W=Wide; MW=MegaWide

Special Compositions: Cruising, Bathymetric, Commercial/Fishing

Acknowledgment / Warning!



Navigators must always remember that C-MAP Electronic charts are produced using official Hydrographic Office (HO) charts and under the controls of an ISO 9002 certified quality system. They are accurate to the best of our knowledge, and any inconsistencies found are generally due to undetectable limitations in the HO charts themselves. C-MAP electronic charts are currently considered legal replacements of official HO charts and so should be used only as supplements to these, together with prudent navigation habits. Where due, Royalty Charges are included in C-CARD prices and paid to National Hydrographic Authorities.



For more information or ordering contact C-MAP Office nearest you

© C-MAP - Friday, September 1, 2006