

# INTERPHASE

## PC/VIEW™ AND PC/180™

Windows Based "Black-Box" Forward Looking Dual Axis Scanning Sonars



### *New Interphase PC/View™ for Windows*

*Shown at left with full screen forward vertical scanning view. The PC/View™ or PC/180™ will convert your desktop or laptop PC into a powerful color scanning sonar. Acoustic Interface Module, Software and parallel port interconnect cable are also shown in picture at left.*

Turn your on-board PC into a powerful dual axis forward scanning sonar with Interphase's new **PC/View™** or **PC/180™** for Windows. Use the forward looking side-to-side horizontal scanning pattern to aid navigation through difficult or uncharted waters or give you the critical advantage in finding and tracking bait and schools of fish. Then switch to the vertical forward scanning pattern to determine the depth of forward targets and view changing bottom conditions ahead. Finally, switch to the conventional down-looking view to see directly beneath your boat.

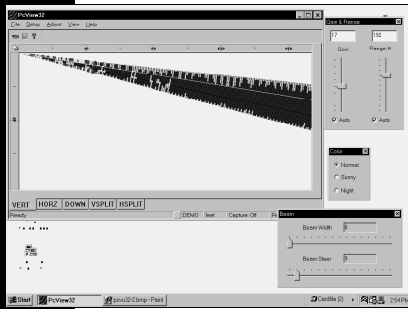
The **PC/View™** scans a moving acoustic beam through a 90 degree horizontal sector (up to 45 degrees each side of the vessel) to help locate

channels, underwater obstacles, structure or schools of fish, or can be set to scan vertically from the surface to the bottom to show obstacles and shallowing bottom conditions directly ahead.

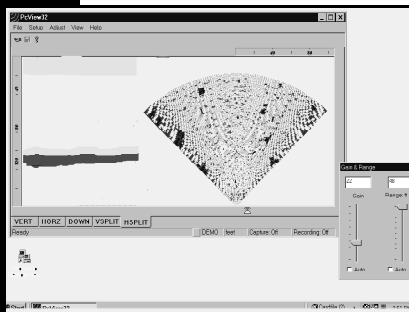
The **PC/180™** has all the capability of the **PC/View™** but scans a full 180 degree forward horizontal sector (90 degrees each side of the vessel's bow) to provide even greater capabilities to follow channels, find passages through reef infested waters, help identify shallowing conditions on either side of the vessel, and locate fish and schools of bait in deeper waters.

**INTERPHASE**  
*Forward Looking Technology*

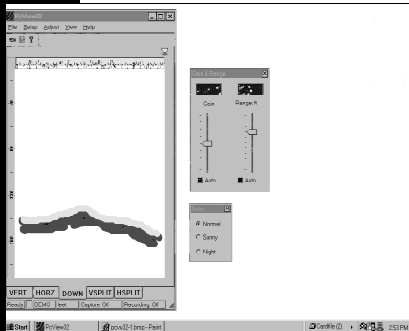
# PC BASED FORWARD SCANNING SONARS



Above window shows full screen vertical scan mode with several adjustment dialog boxes open beside the main window.



Split Screen View showing the PC/View Horizontal Scan on the right and conventional down-looking display on the left. Shown with Range and Gain Adjustment Control open.

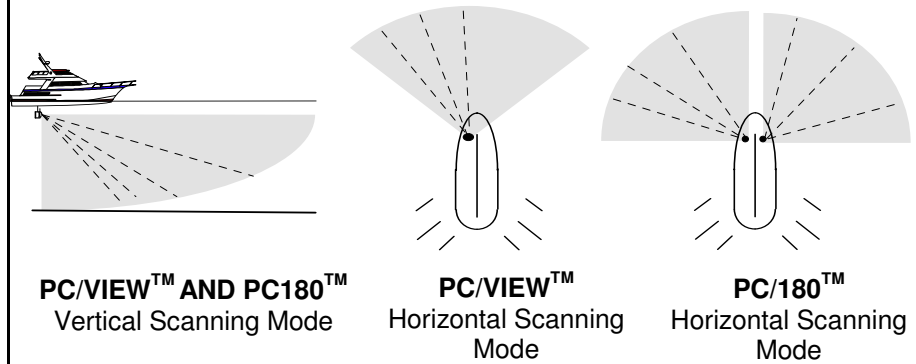


Both the PC/View and the PC/180 can operate as conventional down-looking color depth-sounders as shown above. They both can reach depths to 800 feet.

## INTERPHASE PC/VIEW™ AND PC/180™

Both the PC/View™ and the PC/180™ are full 32-bit multi-tasking applications that can work simultaneously with other popular marine software. Now you can use your PC to display your position on your favorite chart program while scanning forward underwater looking for shallowing conditions, bottom structure or underwater obstructions with both displays on the same screen at the same time!

### AREA OF COVERAGE FOR PC/VIEW™ AND PC/180™

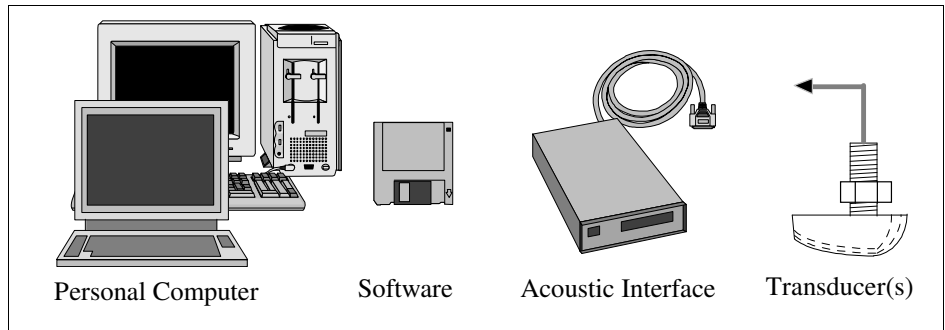


- Hi-Resolution Display Capability
- Scans a Moving Beam Vertically or Horizontally Forward of Vessel
- Forward Range Alarms
- High Power for Forward Ranges up to 1,200 feet.
- Full and Split Screen Displays
- Variable Oversample for High Resolution Zoom
- Automatic or Manual Gain and Depth Adjustments
- US, Metric and Nautical Display Modes
- Over 400 Watts of RMS Power
- Works in VGA Display Mode
- 200 khz Operation

- Maximum Forward Range: 1,200 feet
- Maximum Bottom Depth Range: 800 feet
- Scanning Beam: 12° (width of beam approx. 20 ft. at 100ft. distance)
- TVG - Time Variable Gain Receiver
- Interface Requires 10 - 16 VDC @ 0.3Amp.

#### MINIMUM SYSTEM REQUIREMENTS

- Pentium or "586" Class CPU
- Free Parallel Port
- 12v Power Supply
- Win95, Win98, Win NT, Win 2k and XP
- CD-Rom Drive
- 10 MB Free Hard Disk Space



## INTERPHASE Forward Looking Technology

Interphase Technologies, Inc., 2880 Research Park Dr., # 140, Soquel, CA 95073 U.S.A.

Telephone: (831) 477-4944 Fax: (831) 462-7444

email: comments@interphase-tech.com Website: www.interphase-tech.com

© 1999 Interphase Technologies, Inc. Printed in U.S.A. All Specifications Subject to Change Without Notice.